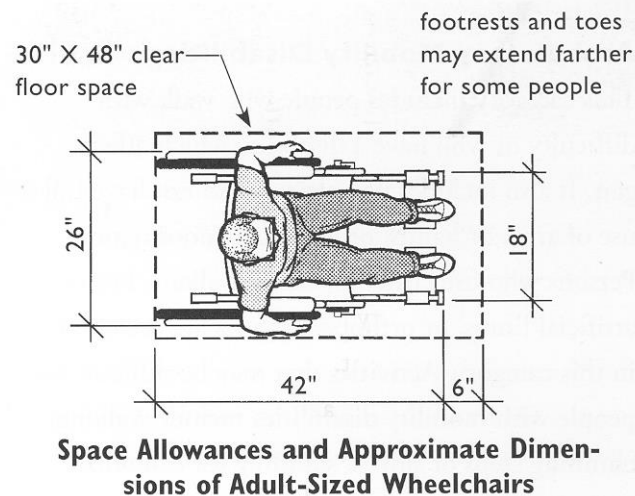


MEASURING FOR ACCESSIBILITY 101

Introduction: This is a basic guide to assist you in evaluating the accessibility and usability of your building or facility by persons with disabilities. You are generally evaluating whether a person with a physical disability can approach, enter, use and exit your building. This does not mean that every part of your facility must be accessible; rather, it means, for example, that a person using a wheelchair can enter your building and have an equal opportunity to use and/or benefit from your services.

All accessibility standards use a wheelchair-user as a baseline for access. If a wheelchair-user has access, persons with other physical disabilities will also be able to use the facility's services (e.g., persons using crutches, canes, walkers, leg-braces, etc.). There are additional provisions that are specific to persons who are blind and/or deaf.

The space that a wheelchair occupies when sitting still is 48" by 30". This is referred to as the clear-floor space. The 30" is the width of the chair (side-to-side) and the 48" is the length of the wheelchair from the back wheels to the toes.



This access checklist or survey will determine whether a wheelchair-user can get from one point to another without a physical or architectural barrier (e.g., steps, doors that are too narrow, light switches that are too high, toilet stalls that are too narrow or too small, etc.)

Recommended Tools: This checklist, tape measure, pen and clipboard.

I. Arrival

A. How do consumers get to your program?

- Taxi
- Public Transportation
- Ride from social services agency
- Car
- Walk-in

If consumers use their own car, are parking spaces provided?

- Yes No

If yes, are any of those spaces identified by the International Access Symbol?

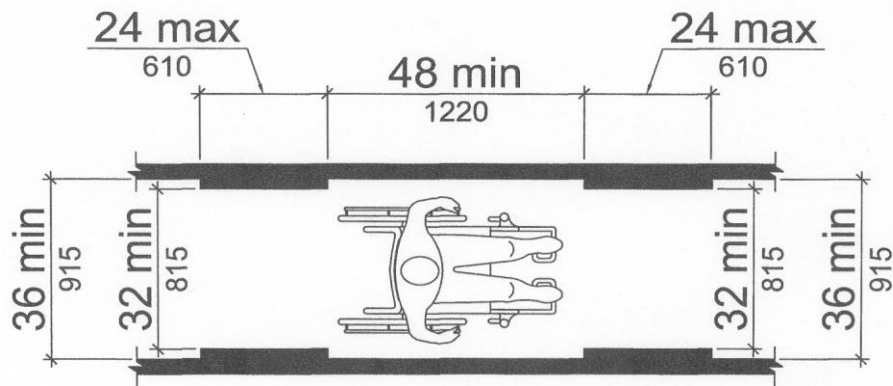
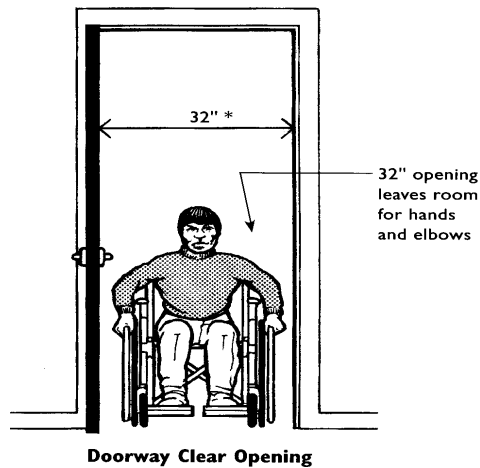


- Yes No

B. From the arrival point, is there an accessible route from this point to and through the entrance to your facility? Remember, you are looking for the route where a wheelchair-user can move from the arrival point into your building.

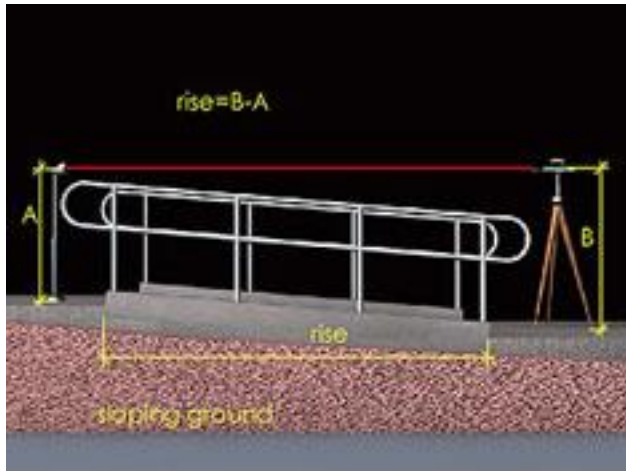
[Note: A wheelchair-user traditionally pushes the wheels to move the wheelchair. Therefore, to get through a door, the doorway needs to be a minimum of 32" wide. The path or route must be a least 36" wide to allow for another person, not using a wheelchair, enough space to pass by the wheelchair.

- * 32" clear minimum for accessible doors
- 32" nominal clear width for usable doors



- C. Steps cannot be part of an accessible route. Does the path from the arrival point to the entrance contain: (Check all that apply)
- Ramp
- Sidewalk
- Lift or Elevator
- D. A ramp or path (sidewalk) should not be too steep. A ramp can be steeper than a sidewalk because it is required to have handrails on both sides and a 5-foot or 60" square clear space at the bottom and top of the ramp. A sidewalk is not required to have handrails and must have a 5-foot or 60" space at the entrance door only. Both a ramp and a sidewalk must be at least 36" wide. [Note: The 5-foot or 60" turning space is the area needed for a wheelchair-user to enter, turnaround and exit.]

For ramps, the slope must not be any steeper than 8.33% or 1 in 12. This simply means that for every inch of the height of the barrier (e.g., steps); the ramp must be 12" long. For every foot of height of the barrier, the ramp must be 12' long. For example, if a ramp is to provide an alternative route for a step that is 5-inches high, the ramp must be at least 60" or 5' long.

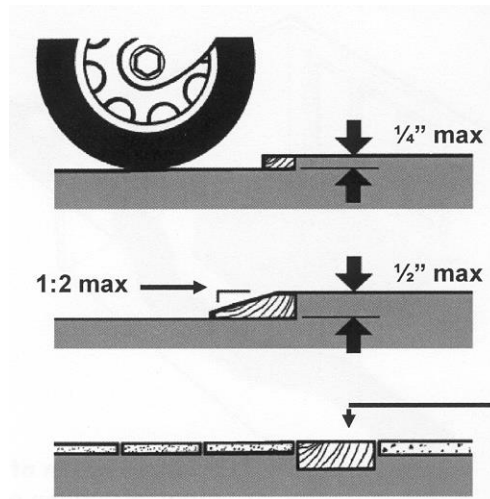


The degree of slope of a sidewalk is primarily the responsibility of the DC government; however, if you, staff members, or consumers have difficulty with the slope of the path or sidewalk, make note of it here:

- E. Doors. Check all that apply to your primary entrance doors.
1. When the door is opened, does the doorway provide at least 32" of clearance? [Note: This includes the door jamb and the thickness of the door but not the door handle.]
 Yes No, how wide? _____
 2. Does the door have a lever-door handle?



- Yes No, the hardware is _____ type.
 3. Does your door use an automatic opener (button to open/operate) or a power-assisted door hinge?
 Yes No,
 If no, is the door difficult to pull or push open? Does the door take at least 3 seconds to close? _____
 4. Is the threshold at the doorway 1/2" high or less?



Yes No

Is the threshold curved or beveled?

Yes No

F. Do you have signage which directs visitors to the accessible entrance?

Yes No

II. Common Areas - These are areas where everyone goes when they enter or exit a building. Some of the features of a common area are:

- Reception Area
- Public Restroom
- Waiting Area
- Laundry Facility
- Mail Boxes
- Meeting or Dining Areas
- Public Office Areas
-

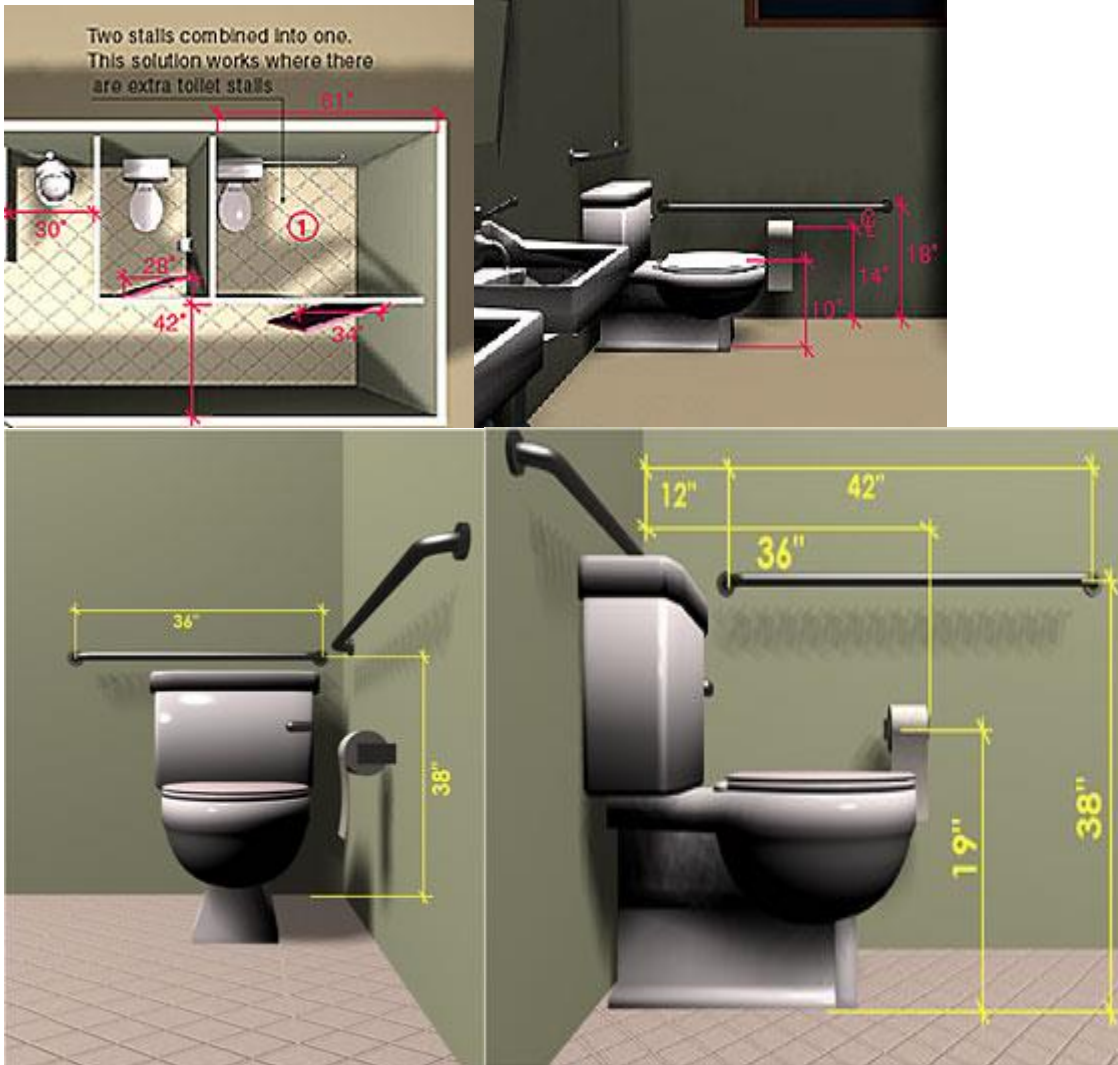
A. Are there public restrooms (this does not include employee restrooms or resident's bathrooms)?

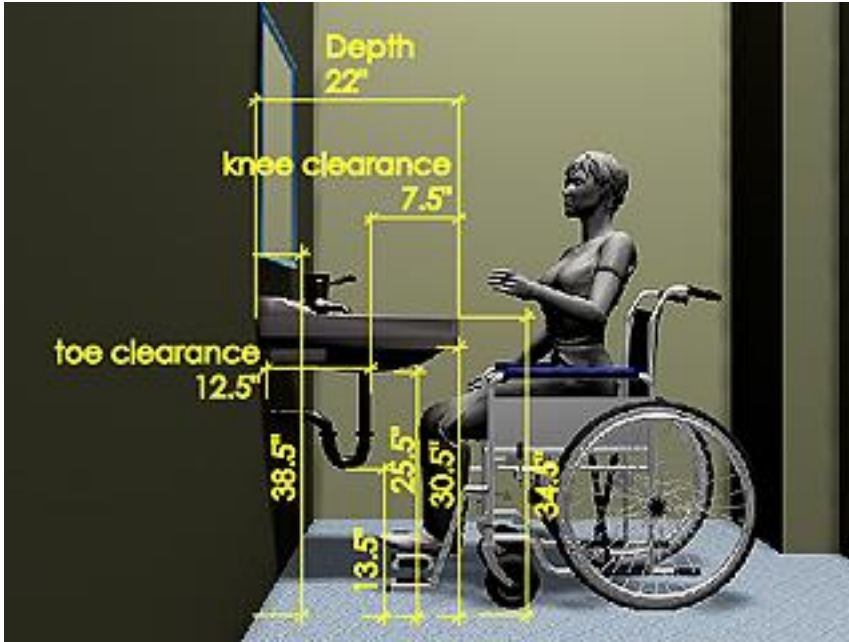
___ Yes ___ No

If yes, does the doorway provide at least 32" clear opening?

___ Yes ___ No

- Is there at least one accessible stall which contains a door that provides at least 32" clearance (width)?
- Does the inside of the stall measure at least 59" by 60"?
- Are there grab bars on the back and side of the water closet?
- Is the height of the toilet when the lid is down, at least 17" - 19"?
- Is the center of the toilet-seat opening no farther than 18" from the wall measuring sideways to the wall (centerline measurement)?
- Is the toilet paper dispenser mounted at least 19" above the floor?

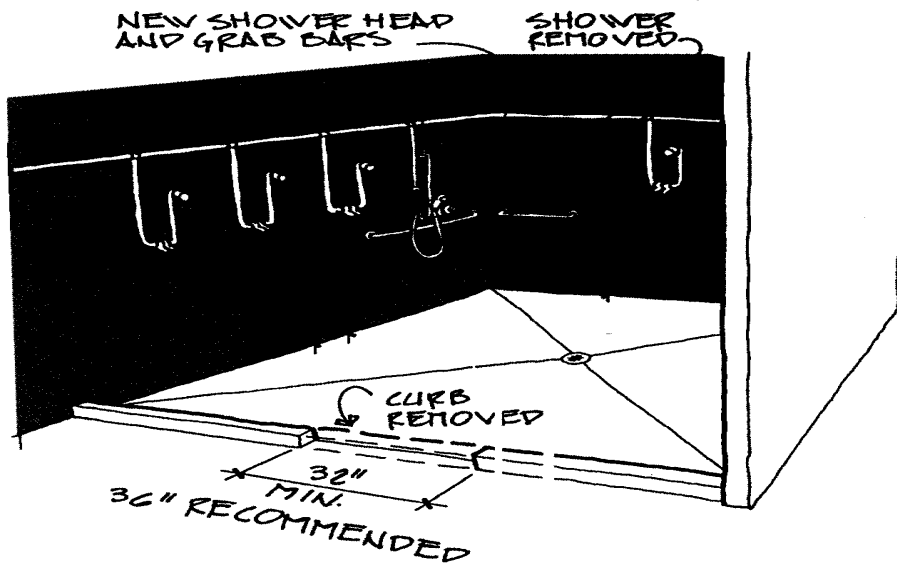




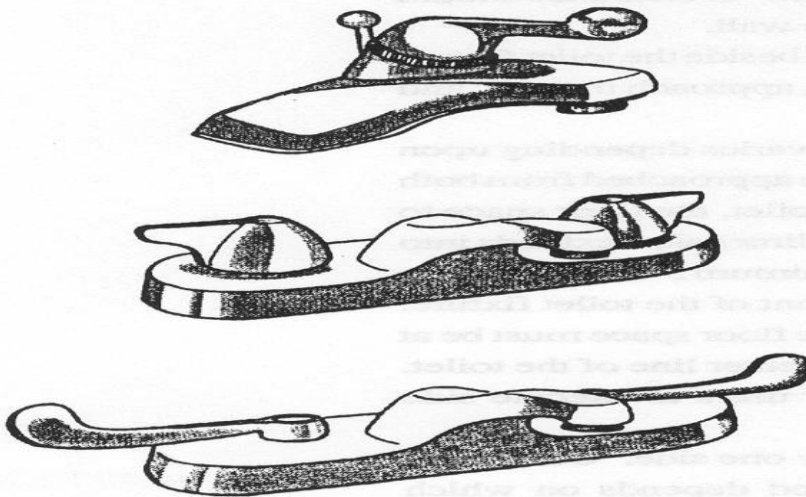
Yes to all
 No to at least one
 Explain: _____

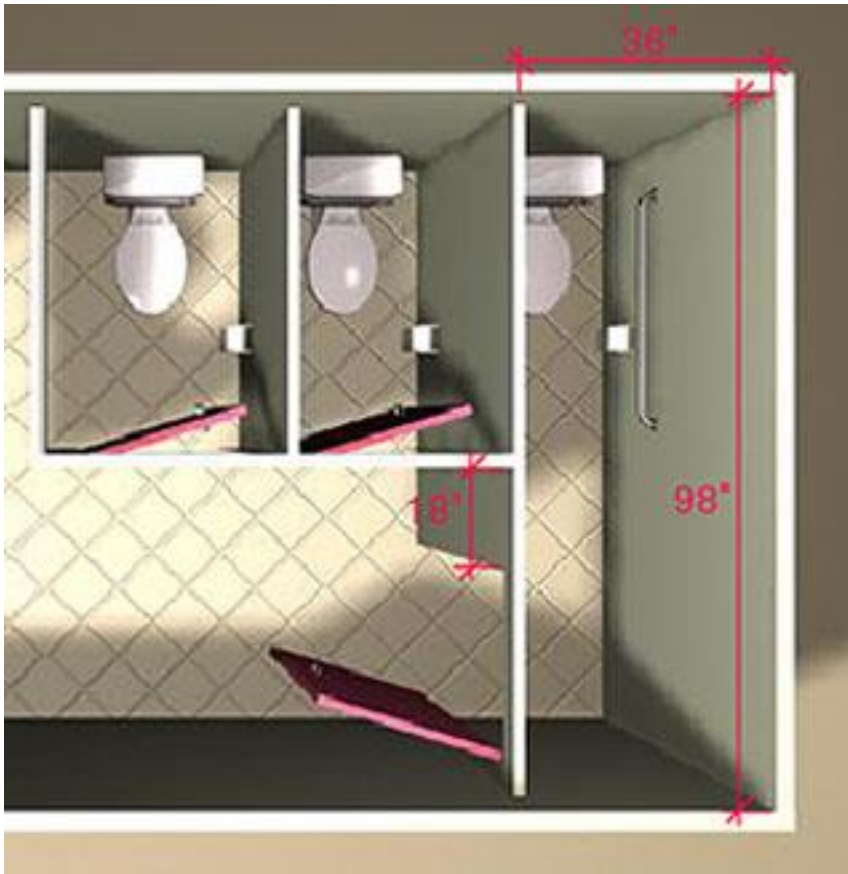
- B. Is there a public area for meetings, recreation or serving meals?
 Yes No
 If yes, is the room on an accessible route?
 Yes No
 If food is served to consumers using food trays, is the counter no higher than 36" above the floor?
 Yes No
- C. Are laundry machines available to consumers?
 Yes No
 If yes, is the laundry room on an accessible route?
 Yes No
 If yes, do at least one washer and one dryer have the door on the front of the appliance to permit a wheelchair-user to reach/use the appliance?
 Yes No
- D. Are mailboxes provided in your facility?
 Yes No
 If yes, is 20% of the total number of mailboxes located at a maximum height of 54" above the floor/ground?
 Yes No
- E. Does your program provide emergency housing only?
 Yes No
 If yes, are all sleeping areas (beds, cots) located on an accessible route?
 Yes No
 If no, how many beds are located on an accessible route?

- F. Are all restrooms and shower areas used by program participants located on an accessible route?
 Yes No
If no, what percentage of these restrooms is located on an accessible route? _____
- G. Are at least one toilet (water closet) and one shower enclosed in an area that is at least 36" wide? Yes No
Does the shower threshold measure 1/2 " or less? Yes No
Are there grab bars at the toilet and shower/tub? Yes No
Does the sink and shower/tub have lever-type faucet controls?
 Yes No



Single-lever or Blade Handles Are the Easiest to Operate





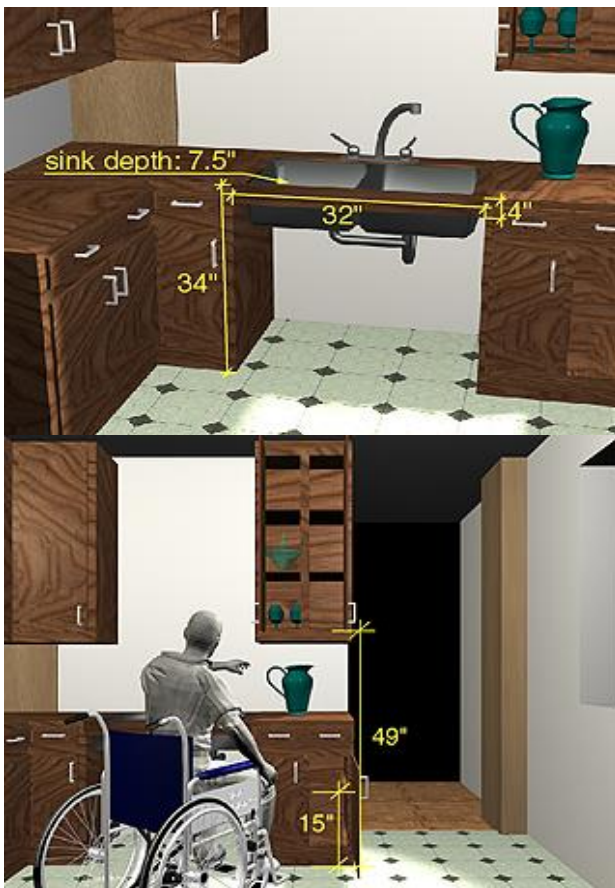
- H. Does your program offer individual units (e.g., apartment, etc.)?
 Yes No
 Do all doorways in this unit, including the entrance, provide a clear opening of at least 32"?
 Yes No
 Is there an accessible route (36" wide with doorways providing at least 32" clear opening) through the unit and into all rooms?
 Yes
 No, if no which doorways do not provide 32" clear opening and which rooms are not located on an accessible route?
 Doors _____
 Room _____

- I. Does at least one bathroom contain all of the following features?
- Located on an accessible route? Yes No
 - Toilet seat mounted at a height of between 17" - 19"?
 Yes No
 - Toilet centerline that measures between 17" - 19"?
 Yes No
 - Grab bars mounted on the back and side walls adjacent to the toilet? Yes No
 - Sink mounted no higher than 34" from the floor with open area under the sink of at least 29" between bottom of sink and floor?
 Yes No

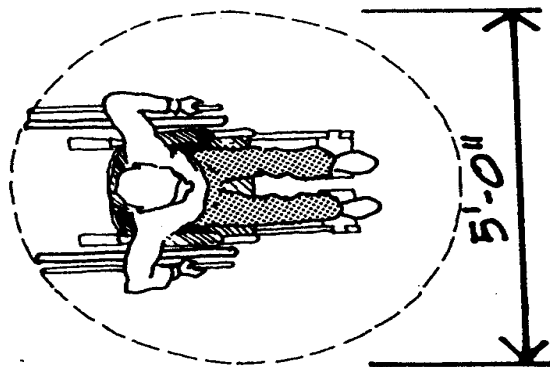
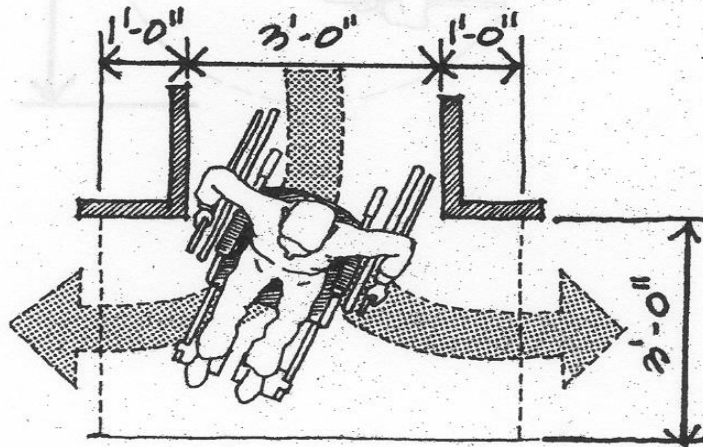
- Mirror mounted so that bottom of the reflective surface is no higher than 40" above the floor? ___ Yes ___ No
- Grab bars mounted on back and side walls of the tub or shower? ___ Yes ___ No

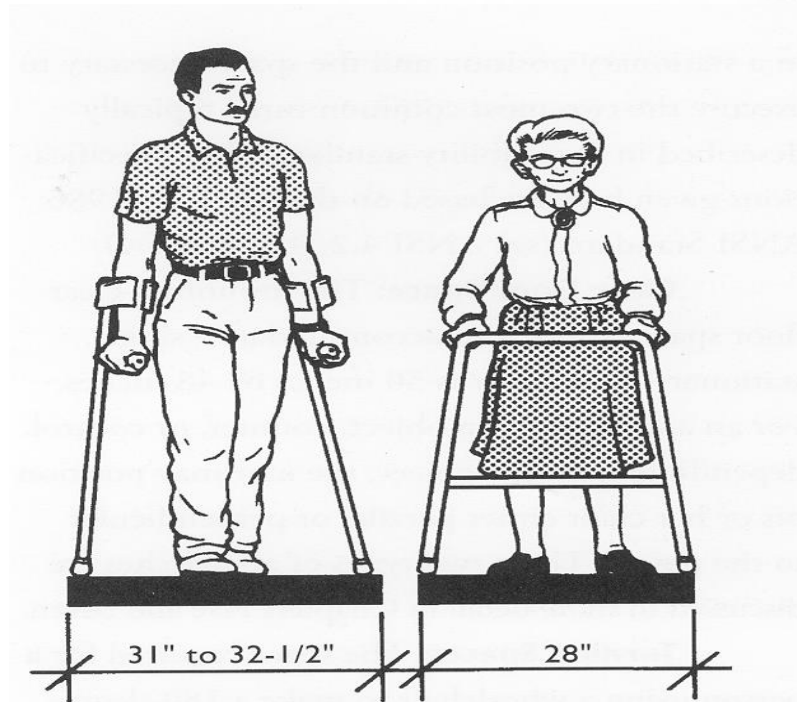
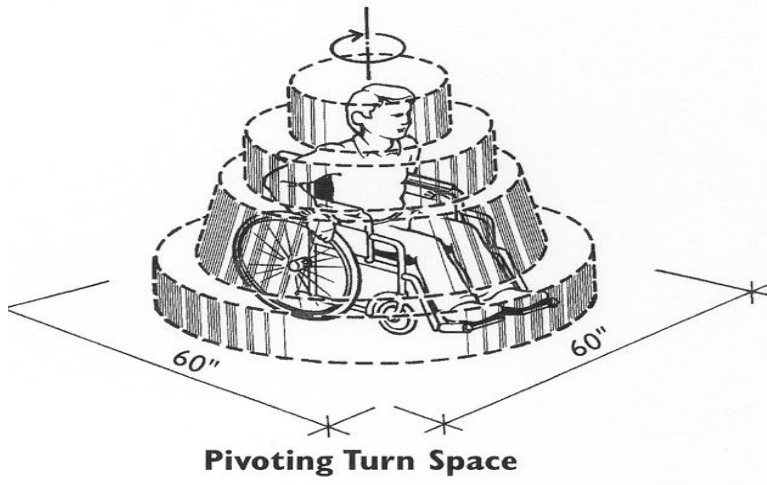
J. If a kitchen is provided in this unit, does it contain the following features?

- Located on an accessible route? ___ Yes ___ No
- Clear floor space provided at all appliances? ___ Yes ___ No
- Kitchen sink mounted no higher than 34" above the floor with a sink depth no greater than 6 ½"? ___ Yes ___ No
- At least one counter area that measures 30" wide and no greater than 34" above the floor? ___ Yes ___ No
- If a cabinet is provided under the sink, is it removable? ___ Yes ___ No



Additional Graphics







Comments/Concerns _____

